

**KCNIP3 Antibody (N-Term)**  
**Peptide-affinity purified goat antibody**  
**Catalog # AF3395a****Specification**

---

**KCNIP3 Antibody (N-Term) - Product Information**

Application	WB, E
Primary Accession	<a href="#">O9Y2W7</a>
Other Accession	<a href="#">NP_038462.1</a> , <a href="#">30818</a>
Reactivity	Human
Predicted	Dog
Host	Goat
Clonality	Polyclonal
Concentration	0.5 mg/ml
Isotype	IgG
Calculated MW	29231

**KCNIP3 Antibody (N-Term) - Additional Information****Gene ID** 30818**Other Names**

Calsenilin, A-type potassium channel modulatory protein 3, DRE-antagonist modulator, DREAM, Kv channel-interacting protein 3, KCHIP3, KCNIP3, CSEN, DREAM, KCHIP3

**Dilution**

WB~~1:1000

E~~N/A

**Format**

0.5 mg/ml in Tris saline, 0.02% sodium azide, pH7.3 with 0.5% bovine serum albumin

**Storage**

Maintain refrigerated at 2-8°C for up to 6 months. For long term storage store at -20°C in small aliquots to prevent freeze-thaw cycles.

**Precautions**

KCNIP3 Antibody (N-Term) is for research use only and not for use in diagnostic or therapeutic procedures.

**KCNIP3 Antibody (N-Term) - Protein Information****Name** KCNIP3**Synonyms** CSEN, DREAM, KCHIP3**Function**

Calcium-dependent transcriptional repressor that binds to the DRE element of genes including PDYN and FOS. Affinity for DNA is reduced upon binding to calcium and enhanced by binding to magnesium. Seems to be involved in nociception (By similarity).

#### **Cellular Location**

Cytoplasm. Cell membrane; Lipid-anchor. Endoplasmic reticulum. Golgi apparatus. Nucleus.

Note=Also membrane-bound, associated with the plasma membrane (PubMed:15485870). In the presence of PSEN2 associated with the endoplasmic reticulum and Golgi. The sumoylated form is present only in the nucleus.

#### **Tissue Location**

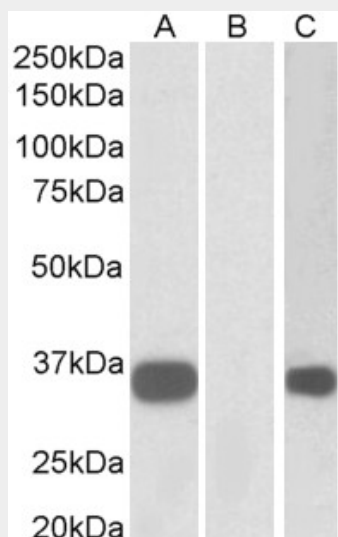
Highly expressed in brain. Widely expressed at lower levels. Expression levels are elevated in brain cortex regions affected by Alzheimer disease.

### **KCNIP3 Antibody (N-Term) - Protocols**

Provided below are standard protocols that you may find useful for product applications.

- [Western Blot](#)
- [Blocking Peptides](#)
- [Dot Blot](#)
- [Immunohistochemistry](#)
- [Immunofluorescence](#)
- [Immunoprecipitation](#)
- [Flow Cytometry](#)
- [Cell Culture](#)

### **KCNIP3 Antibody (N-Term) - Images**



HEK293 lysate (10ug protein in RIPA buffer) overexpressing Human KCNIP3 with C-terminal MYC tag probed with AF3395a (1ug/ml) in Lane A and probed with anti-MYC Tag (1/1000) in lane C. Mock-transfected HEK293 probed with AF3395a (1mg/ml) in Lane B. Primary incubations were for 1 hour. Detected by chemiluminescence.

### **KCNIP3 Antibody (N-Term) - Background**

This antibody is expected to recognize isoform 1 (NP\_038462.1) only.

**KCNIP3 Antibody (N-Term) - References**

The DREAM protein is associated with thyroid enlargement and nodular development. Rivas M, Mellström B, Torres B, Cali G, Ferrara AM, Terracciano D, Zannini M, Morreale de Escobar G, Naranjo JR. Molecular endocrinology (Baltimore, Md.) 2009 Jun 23 (6): 862-70. PMID: 19299442